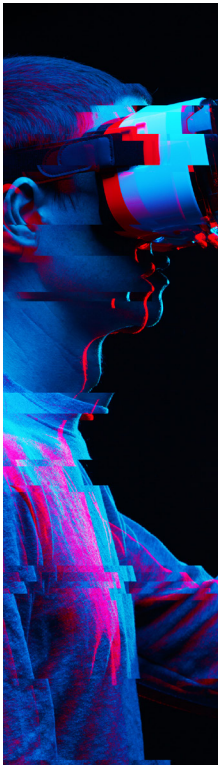


Bluemont Technology & Research focuses on large-scale data-centric applications in the areas of: analytics, data acquisition, visualization (AR / VR), data exploitation, sense-making, machine learning, and training. We provide entry level through SME's in the following areas: software engineering, systems engineering, and program / financial management. We strongly believe that if you control your data, you can control your world.



SERIOUS GAMES / TRAINING / IVT:

The services provided by this activity range from “explainer animations”, “simple follow the trainer” instruction, and AR (Augmented Reality) / VR (Virtual Reality) with fully immersive instruction. These services can also be used for mission planning.

Implementation utilizes AR (e.g., MS HoloLens / NorthStar) and VR (e.g., Oculus / Vive) plus emerging haptic technologies with Immersive Virtual Training (IVT). We also have concurrent use by multiple users and we have the ability for them to interact.

The skills required are; C#, Maya, 3ds Max, and Unity. These applications are bringing a new kind of systems engineering that requires deep technology and strong mathematical/physics background built around graphic arts. We are adding AI (Artificial Intelligence) into the games/training in the form of NPCs (Non-Player Characters). The NPCs can be background activities or they can be enabled to interact with users without the users being aware that it is an NPC or a real individual.



DATA ENGINEERING:

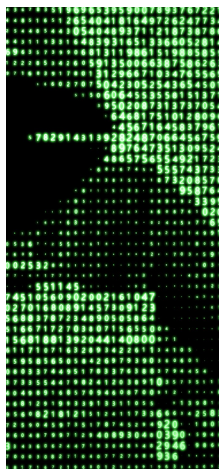
We perform data capture, analysis, exploitation, and visualization. The introduction of machine learning and other AI techniques are providing quicker data analysis. DMM (Data Management Maturity) measures are part of a CMMI evaluation enabling a better understanding of data and it's interaction with other applications / processes. This activity provides personnel and tools that can perform large scale capture, analysis, and visualization of data including custom algorithms.



SERVICE DESK:

We provide “help” functions plus fulfillment and credit card processing. Our service desk is staffed with individuals with ITIL v4 and CompTIA (A+, Network+, Security+, etc.) certifications. We also have a PearsonVUE testing facility on-site to encourage certification. Our experience includes building custom call trees and competency with several ticketing systems.

This activity is available as staff augmentation, managed at your site, out-sourced at our site, or any combination of options.



CYBER SECURITY:

We utilize visualization from gaming technologies to virtualize the environment and allow multiple users to interact within the network and quickly diagnose/detect anomalies. The addition of AI techniques (adversarial, reinforcement learning, machine learning) provide Cyber Security Analyst the tools to detect and protect the network from threats. We can provide personnel and pre-built tools that can support every phase of development, operations, and deployment. Our tool suite can also be a major discriminator in proposals. Our SME's have the latest security credentials including: (ISC)², CompTIA, ISACA, and SANS.



SECURITY AND PROCESS ENGINEERING:

We conform with ISO 9001 Quality, ISO 20000 ITSM (Information Technology Service Management), and ISO 27001 (Information Security) standards. In addition, we develop processes using Agile sprints along with ITIL v4 and CMMI Dev / Svc process. This activity developed for our own consumption but we have found it is essential for companies seeking CMMC certification. We can perform a readiness evaluation or supplement your staff with experts. Our skilled software and systems engineering personnel are available to assist in your operation and developmental tasks.

COMPANY INFORMATION

CAGE: 4USM9 | DUNS: 806332743 | TIN: Provided upon request

NAICS Codes (selected subset)

- 541511** Custom Computer Programming Svcs
- 541512** Computer Systems Design Svcs
- 541513** Computer Facilities Mngmt Svcs
- 541330** Engineering Svcs
- 541690** Other Scientific & Technical Consulting Skills
- 541990** All Other Professional, Scientific & Technical Svcs
- 541430** Graphic Design Svcs
- 541490** Specialized Design Svcs
- 541611** Admin Mngmt & General Mngmt Consulting Svcs

STANDARDS/PROCESSES

- CMMI - Partner
- CMMC - Level 3 Target
- ISO 9001 Quality
- ISO 20000 ITSM
- ISO 27001 IS
- NIST 800-171 CUI
- NIST SP 800-53r4
- OPSEC
- IEEE 12207-2008
- ANSI/EIA-649-B 2011
- Agile (Sprints)
- Scrum
- Kanban
- ITIL

TOOLS

- Unreal
- Unity
- MS Dynamics 365
- Splunk, GNS3, Dynamips
- Adobe (Premiere, Photoshop, etc.)
- Autodesk (Maya, 3ds Max, Mudbox, AutoCAD, etc.)
- VR / AR (Oculus, MS HoloLens 2, NorthStar, Vive)
- JetBrains Rider
- Atlassian (Jira)
- Raspberry Pi + Hats

SELECT CUSTOMERS (PRIME AND SUBCONTRACT)

Booz | Allen | Hamilton



Minerva Engineering



Virginia Corporation | Founded 2007 | DCAA Approved Acct. Systems

PSC Codes (selected subset)

- AJ21/AJ26** R&D Math and Computer Science
- B544** Technology Studies and Analyses
- D301/D309** Automatic Data Processing
- D316** Telecommunications Network Mgmt Svc
- D321** IT & Telecommunications - Help Desk
- D408** Program Mgmt / Support Svcs
- R412/3/4** Simulations / Specs / Systems Eng
- R419** Education Services
- T001/T006** Art-Graphics / Film / Video Productions Svcs

CERTIFICATIONS

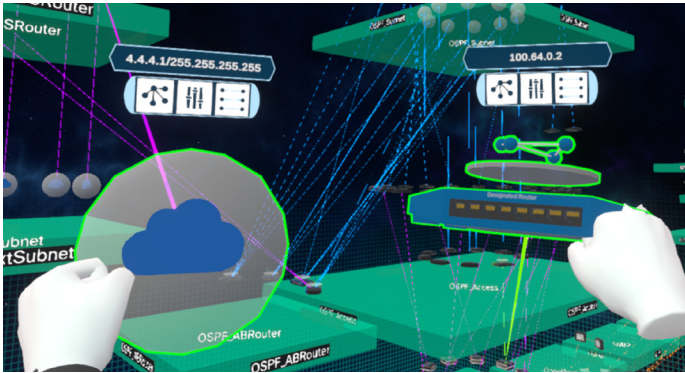
- CompTIA (ITF+, A+, Security+, Network+, Project+, Cloud+)
- PMI (CAPM, PMP, PMP-ACP)
- ISC² (CISSP, CAP, CSSLP, etc.)
- ISACA (CISA, CISM, etc.)
- ITIL v4 Foundation
- Unity Certified Professional Programmer
- Unity Certified Professional Artist
- AWS (Developer, Practioner, Admin, etc.)
- Cisco (CCT, CCNA, CyberOps, CCNP, etc.)

LANGUAGES

- C / C++ / C#
- Java, Jython / Python, Javascript
- HTML, CSS, SD, WordPress, Woo
- R, MathLab, Lua
- Dart / Flutter

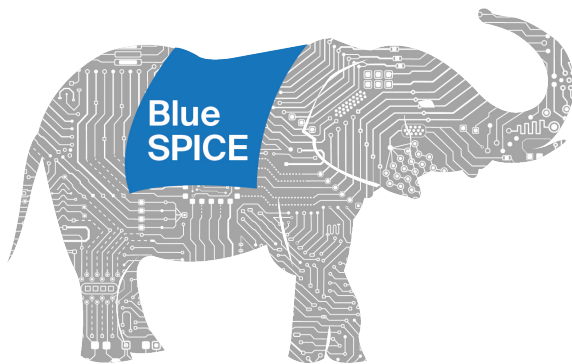
SOCIO-ECONOMIC STATUS





PHOTON

Photon is a passive internet deep packet sniffer including specialized IOT and SCADA protocols with 3D virtualizations using VR (Virtual Reality). No network configuration is required. Photon uses machine learning to build the environment for analysis. Previously captured PCAP files or real-time network traffic can be used to build the environment. Photon utilizes cognitive representations to allow users to rapidly focus on resolving cyber network performance, vulnerabilities, and threats.



BLUE SPICE

BlueSpice is a cloud-based circuit simulator with quantum element extensions. It is based on open source SPICE (Simulation Program with Integrated Circuit Emphasis). As a cloud-based application with expandable compute and memory resources it can significantly out perform any server-based simulation. An optional optimization feature is available that utilizes a Monte Carlo distribution to determine the optimal component characteristics. Overall simulation runtimes are typically reduced from days and weeks to minutes and hours.



OMNITHEA

OmniThea integrates mobile AR (Augment Reality) and VR (Virtual Reality) to enable better situational awareness at the squad level with direct connect to command headquarters. It correlates numerous sensors into a single environment. The capabilities include: asset tracking, monitoring of squad positions (including each individual), their activities, live video streaming, integration of geospatial data and distribution. The squad performs as an ad hoc network with each individual as a discrete network element. This allows them to locate low power emitting devices (baby monitors, IEDs, etc.) using triangulation. Remote individuals can also actively engage as a member of the squad.



SERVICE DESK

We provide "help" functions plus fulfillment and credit card processing. Our service desk is staffed with individuals with ITIL Foundations and CompTIA (A+, Network+, Security+, etc.) certifications. We also have a PearsonVUE testing facility on-site to encourage certification. Our experience includes building custom call trees and competency with several ticketing systems. This activity is available as staff augmentation, managed at your site, out-sourced at our site, or any combination of options.